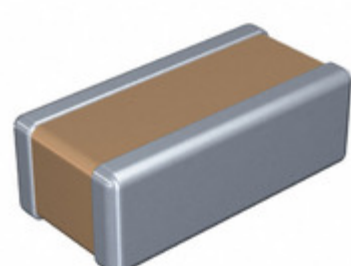


**C0510X7S0G474M030BC**



**Part Number:** [C0510X7S0G474M030BC](#)

**Manufacturer:** [TDK Corporation](#)

**Description:** CAP CER 0.47UF 4V X7S 0204

**Data sheet:** [C Series, Low ESL Reverse Geometry](#)

[C0510X7S0G474M030AC Character Sheet](#)

**RoHS Status:** Lead free / RoHS Compliant

**Ship From:** Hong Kong

**Shipment Way:** DHL/Fedex/TNT/UPS/EMS

Images are for reference only.  
See Product Specifications for product details.  
Buy C0510X7S0G474M030BC with confidence from  
Component-World.HK, 1 Year Warranty

[Request For Quotation](#)

**PRODUCT PARAMETER**

<b>Part Number</b>	C0510X7S0G474M030BC	<b>Manufacturer</b>	<a href="#">TDK Corporation</a>
<b>Description</b>	CAP CER 0.47UF 4V X7S 0204	<b>Lead Free Status / RoHS Status</b>	Lead free / RoHS Compliant
<b>Quantity Available</b>	388857 pcs	<b>Data sheet</b>	<a href="#">C Series, Low ESL Reverse Geometry</a> <a href="#">C0510X7S0G474M030AC Character Sheet</a>
<b>Category</b>	<a href="#">Capacitors</a>	<b>Voltage - Rated</b>	4V
<b>Tolerance</b>	±20%	<b>Thickness (Max)</b>	0.014" (0.35mm)
<b>Temperature Coefficient</b>	X7S	<b>Size / Dimension</b>	0.020" L x 0.039" W (0.52mm x 1.00mm)
<b>Series</b>	C	<b>Ratings</b>	-
<b>Packaging</b>	Cut Tape (CT)	<b>Package / Case</b>	0204 (0610 Metric)
<b>Other Names</b>	445-15902-1 C0510X7S0G474M030ACCT C0510X7S0G474M030ACCT-ND	<b>Operating Temperature</b>	-55°C ~ 125°C
<b>Mounting Type</b>	Surface Mount, MLCC	<b>Moisture Sensitivity Level (MSL)</b>	1 (Unlimited)
<b>Lead Style</b>	-	<b>Lead Spacing</b>	-
<b>Lead Free Status / RoHS Status</b>	Lead free / RoHS Compliant	<b>Height - Seated (Max)</b>	-
<b>Features</b>	Low ESL (Reverse Geometry)	<b>Failure Rate</b>	-
<b>Detailed Description</b>	0.47µF ±20% 4V Ceramic Capacitor X7S 0204 (0610 Metric)	<b>Capacitance</b>	0.47µF
<b>Applications</b>	Bypass, Decoupling		

Component-World.com is a Reliable Stocking Distributor of Electronic Components. We specialize in all TDK Corporation series electronic components. We have 388857 pieces of TDK Corporation C0510X7S0G474M030BC in stock available now. Request a quote from electronics components distributor at Component-World.com, our sales team will contact you within 24 hours.  
RFQ Email: [info@Components-World.com](mailto:info@Components-World.com)

**RELATED PRODUCTS**

	<b>Part#:</b> <a href="#">C0518.38.10</a> <b>Description:</b> 5P/24 7/32T FL/BRD LO-CAP CM	<b>Manufacturers:</b> <a href="#">General Cable</a>	<a href="#">RFQ</a>
	<b>Part#:</b> <a href="#">C0510X6S0G105M030BC</a> <b>Description:</b> CAP CER 1UF 4V X6S 0204	<b>Manufacturers:</b> <a href="#">TDK Corporation</a>	<a href="#">RFQ</a>
	<b>Part#:</b> <a href="#">C0512.5</a> <b>Description:</b> SWITCH CHASSIS PB F SERIES	<b>Manufacturers:</b> <a href="#">C&amp;K</a>	<a href="#">RFQ</a>
	<b>Part#:</b> <a href="#">C0510X6S0G224M030BC</a> <b>Description:</b> CAP CER 0.22UF 4V X6S 0204	<b>Manufacturers:</b> <a href="#">TDK Corporation</a>	<a href="#">RFQ</a>
	<b>Part#:</b> <a href="#">C0510X5R1A474M030BC</a> <b>Description:</b> CAP CER 0.47UF 10V X5R 0204	<b>Manufacturers:</b> <a href="#">TDK Corporation</a>	<a href="#">RFQ</a>
	<b>Part#:</b> <a href="#">C0510X6S0G474M030BC</a> <b>Description:</b> CAP CER 0.47UF 4V X6S 0204	<b>Manufacturers:</b> <a href="#">TDK Corporation</a>	<a href="#">RFQ</a>
	<b>Part#:</b> <a href="#">C0510X6S0G104M030BC</a> <b>Description:</b> CAP CER 0.1UF 4V X6S 0204	<b>Manufacturers:</b> <a href="#">TDK Corporation</a>	<a href="#">RFQ</a>
	<b>Part#:</b> <a href="#">C0515A.18.10</a> <b>Description:</b> MULTI-PAIR 4COND 24AWG SHLD 500'	<b>Manufacturers:</b> <a href="#">General Cable</a>	<a href="#">RFQ</a>
	<b>Part#:</b> <a href="#">C0518.41.10</a> <b>Description:</b> 5P/24 7/32T FL/BRD LO-CAP CM	<b>Manufacturers:</b> <a href="#">General Cable</a>	<a href="#">RFQ</a>
	<b>Part#:</b> <a href="#">C0515A.41.10</a> <b>Description:</b> MULTI-PAIR 4COND 24AWG GRY 50'	<b>Manufacturers:</b> <a href="#">General Cable</a>	<a href="#">RFQ</a>
	<b>Part#:</b> <a href="#">C0517A.41.10</a> <b>Description:</b> MULTI-PAIR 8COND 24AWG GRY 1000'	<b>Manufacturers:</b> <a href="#">General Cable</a>	<a href="#">RFQ</a>
	<b>Part#:</b> <a href="#">C0517A.38.10</a> <b>Description:</b> MULTI-PAIR 8COND 24AWG SHLD 500'	<b>Manufacturers:</b> <a href="#">General Cable</a>	<a href="#">RFQ</a>
	<b>Part#:</b> <a href="#">C0517.5</a> <b>Description:</b> SWITCH CHASSIS PB F SERIES	<b>Manufacturers:</b> <a href="#">C&amp;K</a>	<a href="#">RFQ</a>
	<b>Part#:</b> <a href="#">C0510X5R0J105M030BC</a> <b>Description:</b> CAP CER 1UF 6.3V X5R 0204	<b>Manufacturers:</b> <a href="#">TDK Corporation</a>	<a href="#">RFQ</a>
	<b>Part#:</b> <a href="#">C0510X7S0E105M030BC</a> <b>Description:</b> CAP CER 1UF 2.5V X7S 0204	<b>Manufacturers:</b> <a href="#">TDK Corporation</a>	<a href="#">RFQ</a>
	<b>Part#:</b> <a href="#">C0510X6S0J474M030BC</a> <b>Description:</b> CAP CER 0.47UF 6.3V X6S 0204	<b>Manufacturers:</b> <a href="#">TDK Corporation</a>	<a href="#">RFQ</a>
	<b>Part#:</b> <a href="#">C0510X5R1C474M030BC</a> <b>Description:</b> CAP CER 0.47UF 16V X5R 0204	<b>Manufacturers:</b> <a href="#">TDK Corporation</a>	<a href="#">RFQ</a>
	<b>Part#:</b> <a href="#">C0515</a> <b>Description:</b> SWITCH CHASSIS PB F SERIES	<b>Manufacturers:</b> <a href="#">C&amp;K</a>	<a href="#">RFQ</a>
	<b>Part#:</b> <a href="#">C0516A.41.10</a> <b>Description:</b> MULTI-PAIR 6COND 24AWG GRY 500'	<b>Manufacturers:</b> <a href="#">General Cable</a>	<a href="#">RFQ</a>
	<b>Part#:</b> <a href="#">C0510X5R1C104M030BC</a> <b>Description:</b> CAP CER 0.1UF 16V X5R 0204	<b>Manufacturers:</b> <a href="#">TDK Corporation</a>	<a href="#">RFQ</a>

Related keywords for **C0510X7S0G474M030BC**

<a href="#">TDK Corporation C0510X7S0G474M030BC</a>	<a href="#">C0510X7S0G474M030BC distributor</a>	<a href="#">C0510X7S0G474M030BC supplier</a>	<a href="#">C0510X7S0G474M030BC price</a>
<a href="#">C0510X7S0G474M030BC download datasheet</a>	<a href="#">C0510X7S0G474M030BC datasheet</a>	<a href="#">C0510X7S0G474M030BC stock</a>	<a href="#">buy C0510X7S0G474M030BC</a>
<a href="#">TDK Corporation C0510X7S0G474M030BC</a>			